

# MANUAL Vers. 1.0

## SOCKET TRAY CBS880



### IDENTIFICATION DATA OF THE MANUFACTURER

KOLVER S.r.l.  
VIA M. CORNER, 19/21  
36016 THIENE (VI) ITALIA

### IDENTIFICATION DATA OF THE PRODUCT

CODE: 020042

### TECHNICAL DATA OF THE PRODUCT

DIMENSIONS: 257 x 87 x h40 mm WEIGHT: 1 Kg

### DECLARATION OF CONFORMITY



**KOLVER S.r.l.** declares that the new tool here described: socket/bit tray model CBS880 is in conformity with the following standards and other normative documents: 2006/42/CE, 2006/95/CE, 2004/108/CE, EN 60745-1, EN 60204-1, EN 61000-6-1, EN 61000-6-3.

It is also in conformity with the RoHS II normative.

Name: Giovanni Colasante  
Position: General Manager  
Person authorized to compile the technical file in Kolver

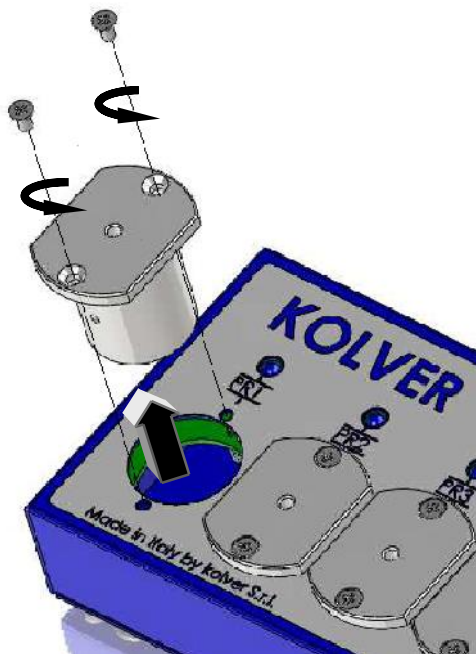
Thiene, Jan. 1<sup>st</sup> 2016

*Giovanni Colasante*

## CONNECTION:

The CBS 880 bit/socket tray is to be used with the EDU 2AE/TOP and EDU 2AE/TOP/TA control units: it allows to select the desired program by using one of the external bits or sockets. The bit/socket tray is supplied with one standard M-F 25 pin cable (1,8 m long, code 880021).

## HOW TO MODIFY THE BIT/SOCKET SEATS:



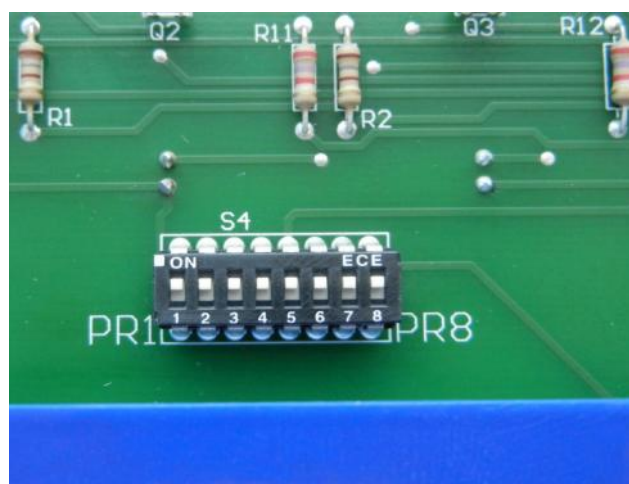
The bit/socket tray comes standard with 3mm diameter bit/socket seats, but it's possible to modify them (up to 24mm).

To modify the diameter:

- 1- Loosen the two screws of the seat you'd like to modify (position 1 of the exploded view)
- 2- Remove the seat (position 2 of the exploded view)
- 3- Widen the seat according to the desired dimension
- 4- Place the seat back to its place and tighten the two screws

## DISABLING SOME OF THE BIT/SOCKET SEATS:

If you don't find it necessary to use all of the seats, you can disable the non-used ones through a "DIP-switch" (see picture below) placed on the internal board. In order to do so, remove the screws and bottom panel (position 8 and 9 of the exploded view). On the DIP-switch, ON indicates the seat is enabled, numbers correspond to programs PR1 to PR8.



## **FRONT PANEL:**

- PR1÷PR8 led for each single program (socket):
  - If on, it indicates the program in use.
  - If flashing, it indicates the program to be selected (sequence mode and ext box enabled )
- STOP MOTOR led: if on it indicates the motor is not enabled.

ESC-OK-RESET buttons are enabled through line 4 in the option menu (OK-ESC) by choosing one of the following options:

INT = Only the buttons on the front panel of the control unit are operational  
EXT = Only the buttons of the socket tray are operational (for the below mentioned options)  
INT- EXT = Both the socket tray and control unit buttons are operational.

- RESET button:  
It resets the program or sequence (line 5 in the option menu)
  - PR = it resets one single program.
  - SEQ = it resets the whole sequence (enabled only if the sequence mode is on).
- ESC button:  
Enabled according to the program (line 17 in the program menu)
  - If ON = the ESC button must be pressed in order to reset the error signal.
  - If OFF = the error is automatically reset.
- OK button:  
Enabled according to line 16 in the program menu.

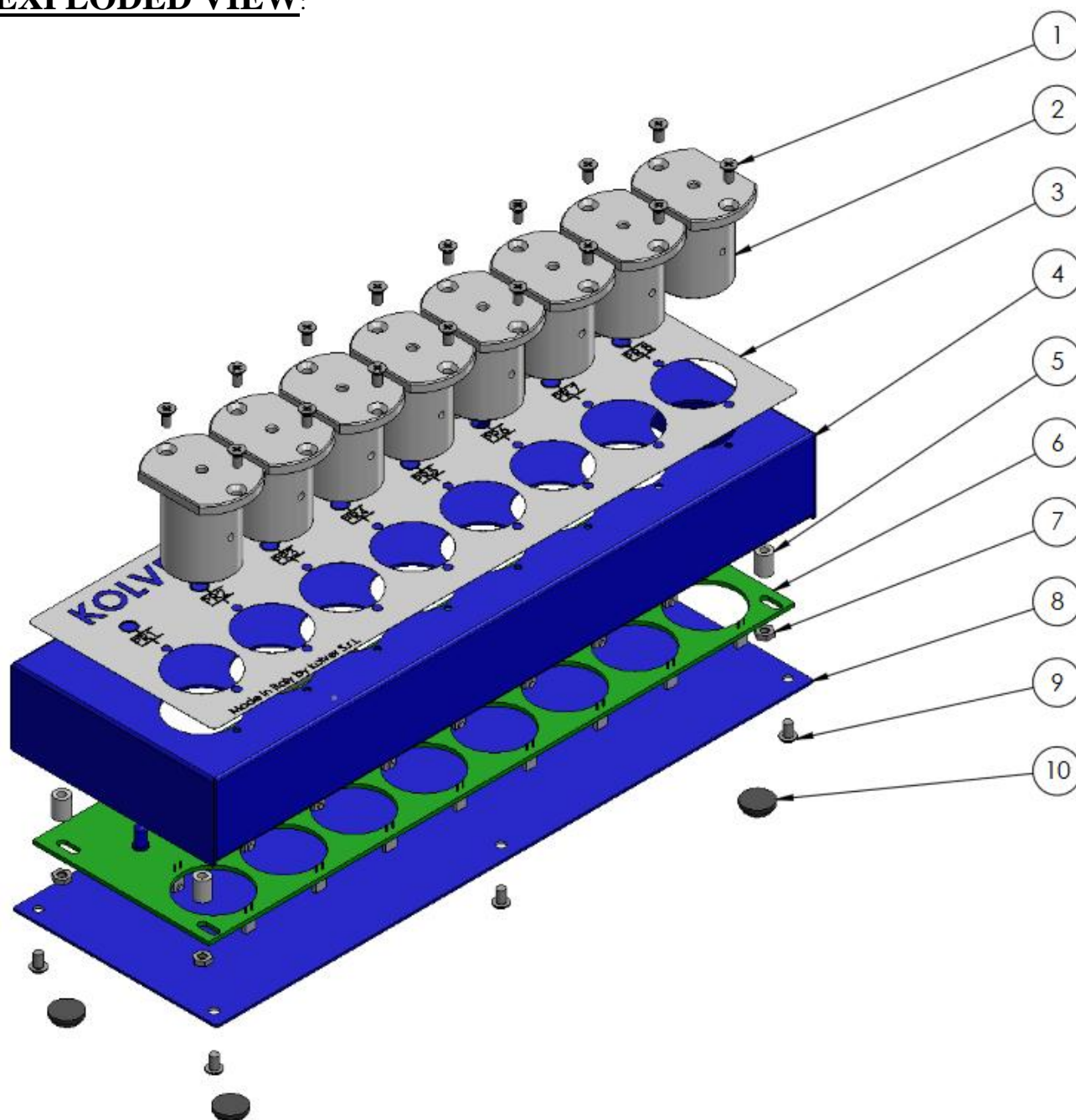
### PROGRAM:

- If ON = the program automatically resets.
- If OFF = the button must be pressed at the end of the program.

### SEQUENCE: (Line 5 in the program menu).

- If ON = the sequence automatically resets.
- If OFF = the OK button must be pressed at the end of the sequence.

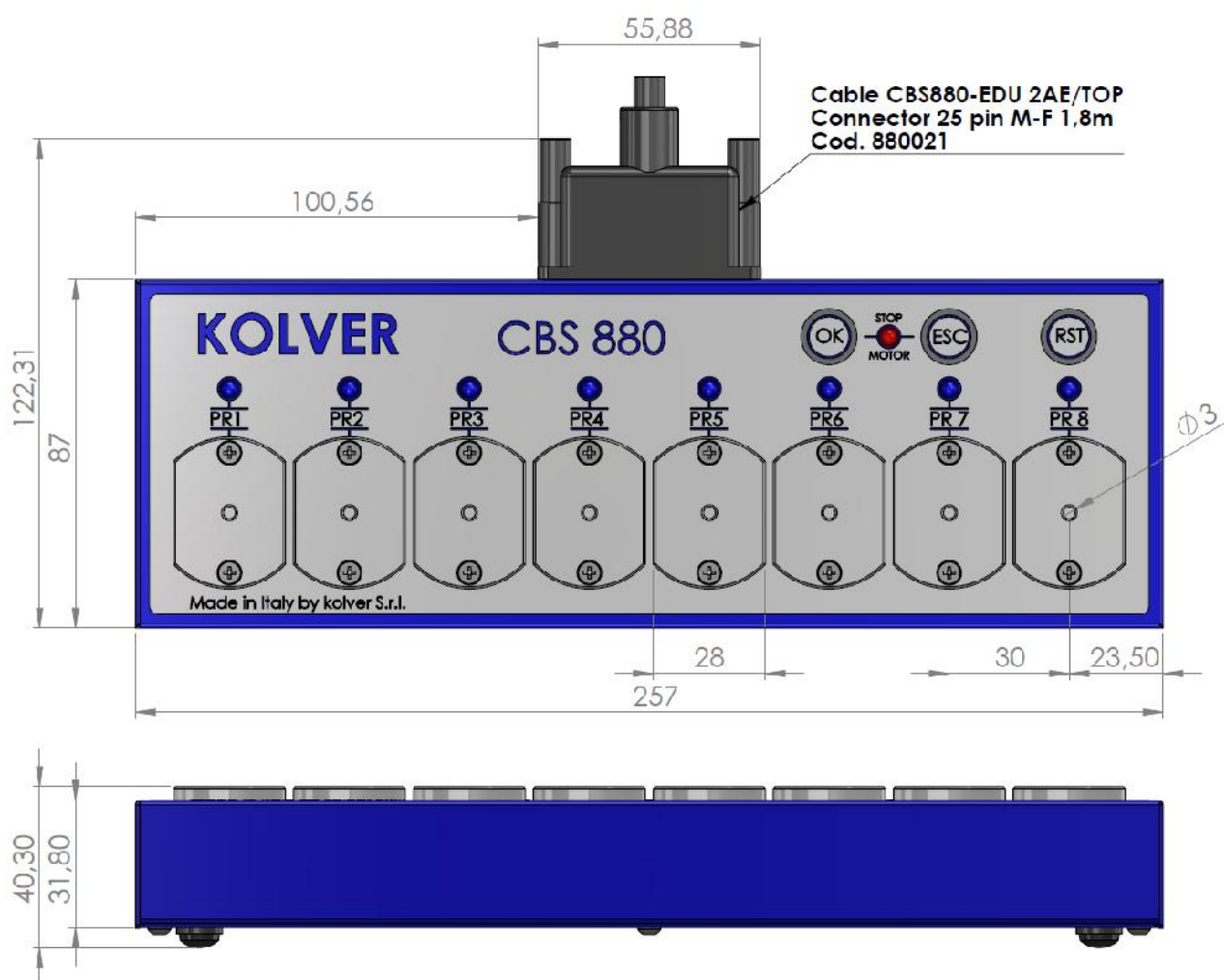
## EXPLODED VIEW:



## SPARE PARTS:

Position	Description	Quantity	Code
1	M3x5 inox countersunk screw	16	880014
2	Aluminium socket	8	880020
3	Membrane	1	880019
4	Cover	1	880017
5	8 mm spacer	4	872435/N
6	Board	1	880016
7	M3 zn-white nut	4	800056
8	Bottom panel	1	880018
9	3x5 Button head screw	6	240605
10	Adhesive support	4	800016
	Connection cable CBS880-EDU 2AE/TOP	1	880021

## OVERALL DIMENSIONS:



## **GUARANTEE**

1. This KOLVER product is guaranteed against defective workmanship or materials, for a maximum period of 12 months following the date of purchase from KOLVER, provided that its usage is limited to single shift operation throughout that period. If the usage rate exceeds of single shift operation, the guarantee period shall be reduced on a prorata basis.
2. If, during the guarantee period, the product appears to be defective in workmanship or materials, it should be returned to KOLVER or its distributors, transport prepaied, together with a short description of the alleged defect. KOLVER shall, at its sole discretion, arrange to repair or replace free of charge such items.
3. This guarantee does not cover repair or replacement required as a consequence of products which have been abused, misused or modified, or which have been repaired using not original KOLVER spare parts or by not authorized service personnel.
4. KOLVER accepts no claim for labour or other expenditure made upon defective products.
5. Any direct, incidental or consequential damages whatsoever arising from any defect are expressly excluded.
6. This guarantee replaces all other guarantees, or conditions, expressed or implied, regarding the quality, the marketability or the fitness for any particular purpose.
7. No one, whether an agent, servant or employee of KOLVER, is authorized to add to or modify the terms of this limited guarantee in any way. However it's possible to extend the warranty with an extra cost. Further information at [kolver@kolver.it](mailto:kolver@kolver.it).